



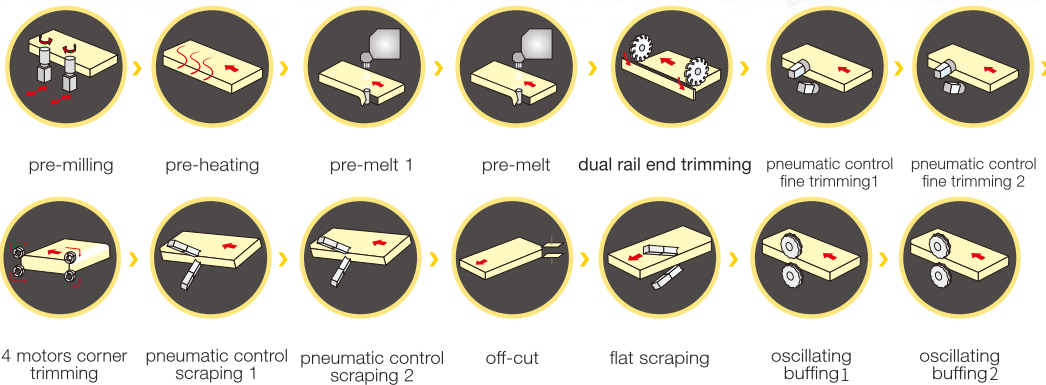
Nanxing

NEW
INTELLIGENT
PC Control

High Speed Edge Banding Machine **NB7PCGM-PC**



Edge banding direction



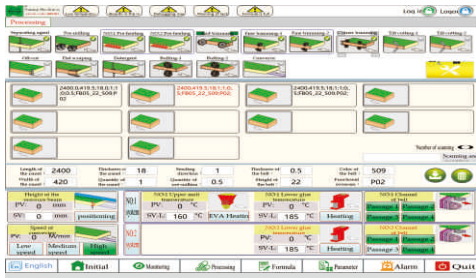
主要技术参数 SPECIFICATION

工件长度 Panel length	工件宽度 Panel width	最小工件尺寸 Min panel size	工件厚度 Panel thickness	封带厚度 Edge tape thickness	进给速度 Feeding speed
≥ 120mm ≥ 200mm (corner trim on)	≥ 80mm	200×80mm (corner trim on)	9-60mm	0.4-3mm	18/22/26m/min
开跟踪进给速度 Feed speed with corner trim. on	吸尘口 Dust collector	总功率 Total power	设备尺寸 Overall dimension	净重 Net weight	
22m/min	φ125mm×8	42kw	11200×1450×1650mm	6110kg	

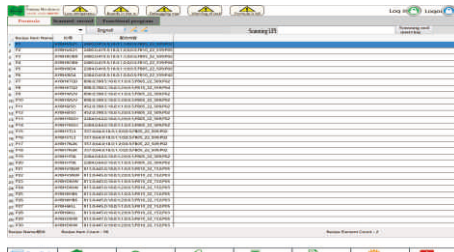
Powerful PC control

Beyond your imagination

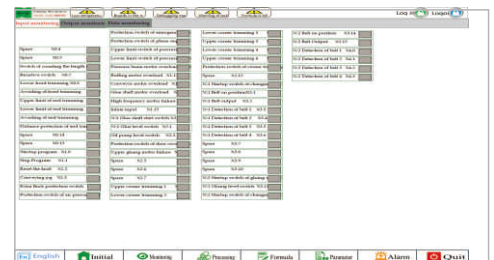
Processing data, production capacity and maintenance time could be obtained through ModBus/TCP internet by production management software. Machine with 8 tapes changing system, 2 sets of gluing units and auto tool adjustment device is possible to motivate by just scanning workpiece label without extra machine set up work, all adjustment work could be done automatically. High efficiency and intelligence to be used in single machine production or within line.



Function and program easy to set up



Select process data based on Bar-code info



Machine status monitoring

What can do by scanning Bar-code?

- 1 Up and down of pressure beam:
- 2 Switch from one glue to the other
- 3 Switch from edge tapes in different colors or thickness
- 4 Adjusting tool position of fine trimming and scraping automatically

